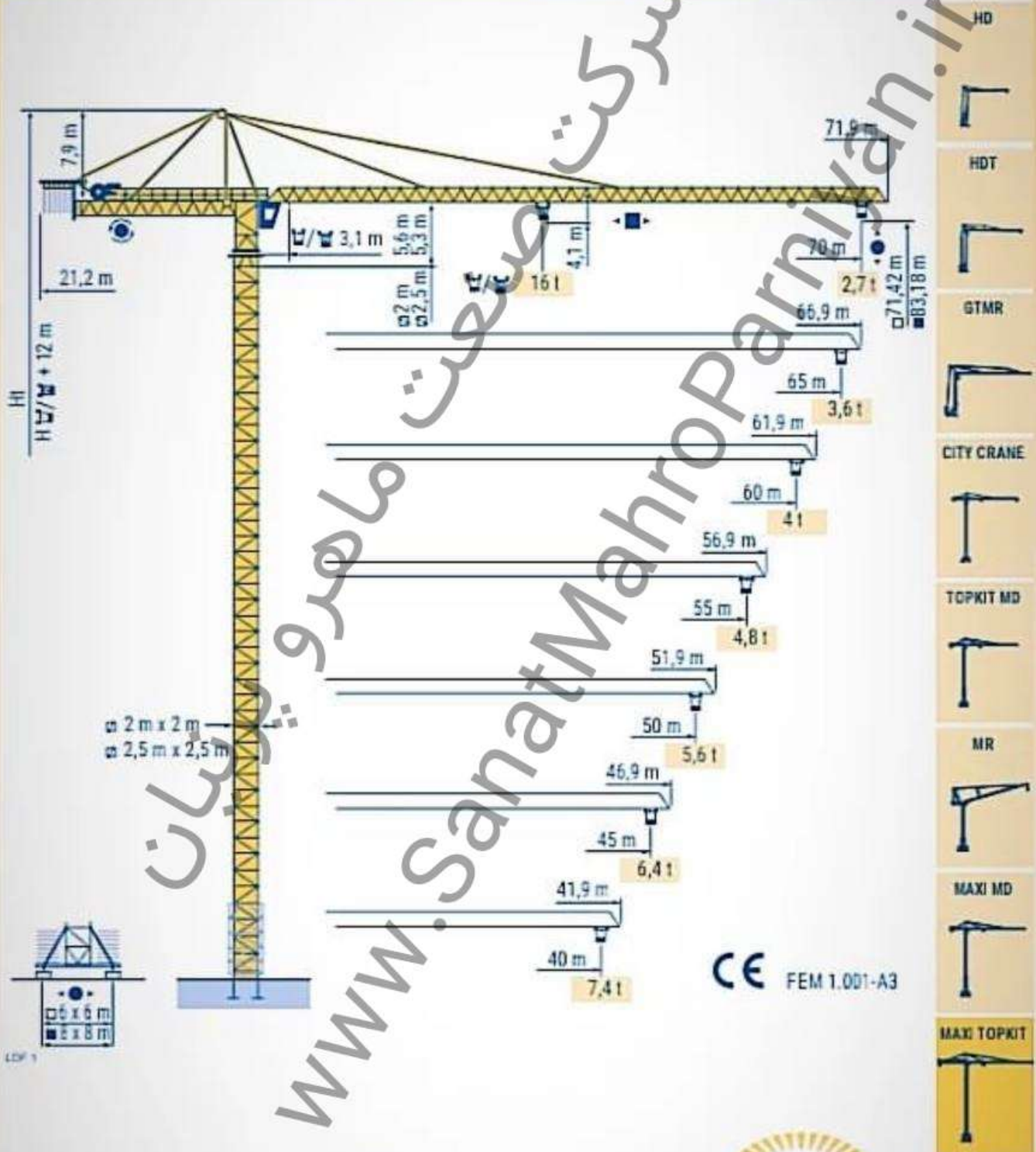


TOPKIT K40/27 C



CE FEM 1.001-A3



POTAIN 

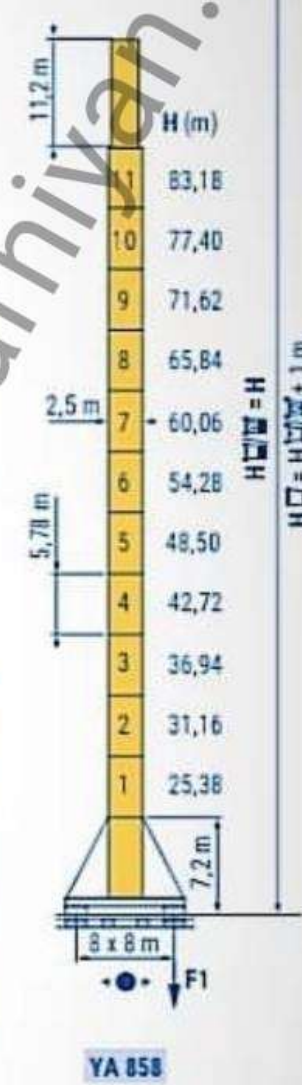
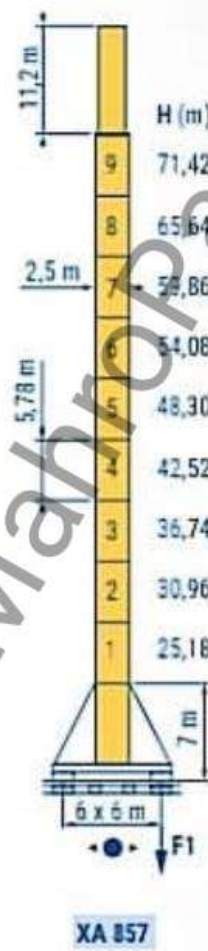
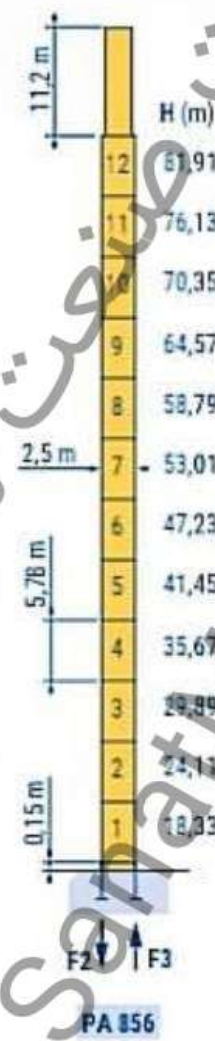
Mat / Réactions
Maste / Eckdrücke

Masts / Reactions
Mástil / Reacciones

Torre / Reazioni

2 m x 2 m

2,5 m x 2,5 m



F2 • 144 t ■ 124 t
F3 • 99 t ■ 78 t

F1 • 91 t ■ 86 t

F2 • 165 t ■ 225 t
F3 • 99 t ■ 163 t

F1 • 113 t ■ 123 t

F1 • 103 t ■ 126 t

ICP 1

• Réactions en service
■ Réactions hors service
A vide sans lest avec flèche et hauteur maximum.

• Reaktionskräfte in Betrieb
■ Reaktionskräfte außer Betrieb
Ohne Last und Ballast mit Maximalausleger und Maximalhöhe.

• Reactions in service
■ Reactions out of service
Without load and ballast with longest jib and maximum height.

• Reacciones en servicio
■ Reacciones fuera de servicio
Sin carga, sin lastre con flecha y altura máxima.

• Reazioni in servizio
■ Reazioni fuori servizio
A vuoto senza zavorra e con braccio massimo e altezza massima.

• 工作状况下的反应
■ 非工作状况下的反应
空载，无配重，起重臂和高度均为最大值

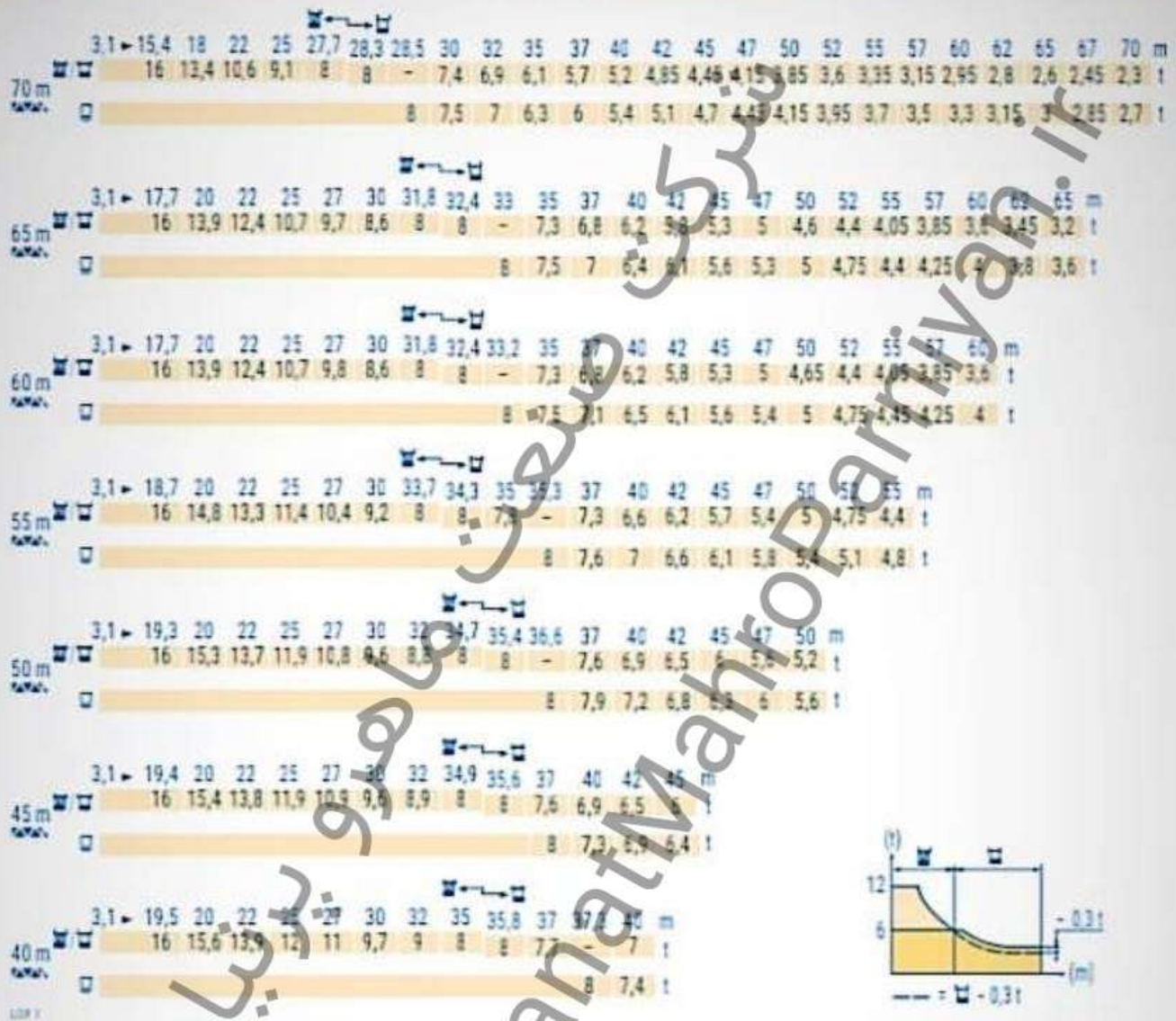
TOPKIT K40/27 C

POTAIN

Courbes de charges
Lastkurven

Load diagrams
Curvas de cargas

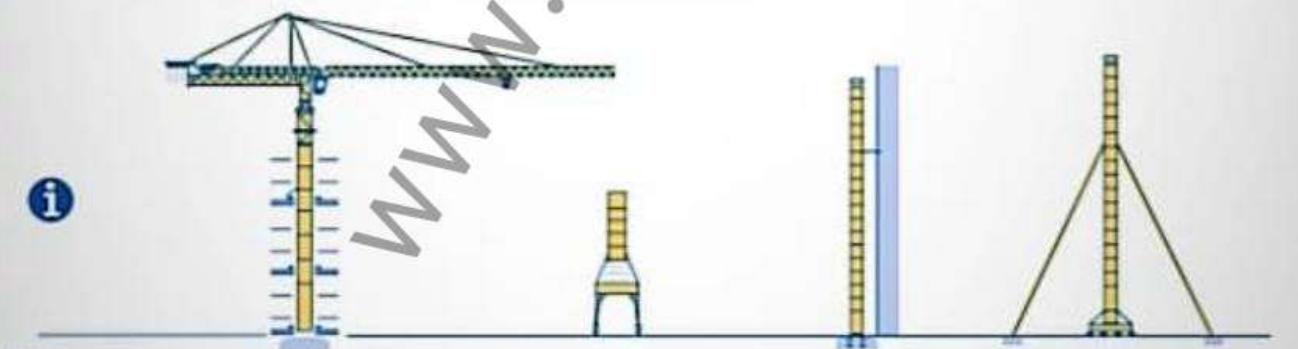
Curve di carico



Autres implantations
Aufstellungsmöglichkeiten

Mounting possibilities
Otras implantaciones

Altre postazioni
其它安装



- i** Nous consulter / Consult us / Consultateci / 请向此方咨询
- i** Aid Antrage / Consultarnos / Consultateci / 请向此方咨询

TOPKIT K40/27 C

