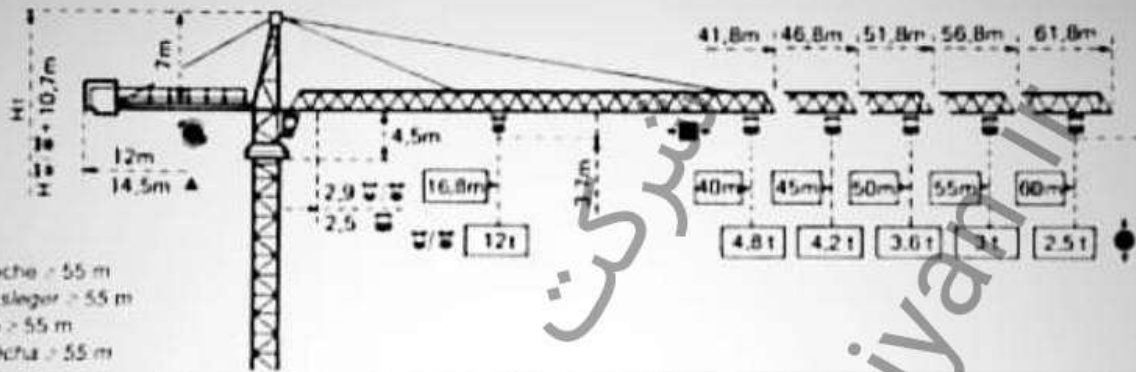


TOPKIT H30 / 25C

POTAIN 

TOPKIT H30 / 25C

Cotes Abmessungen Dimensions Dimensiones



Mature Mast Mast Mastif
2 m x 2 m

ZG 684

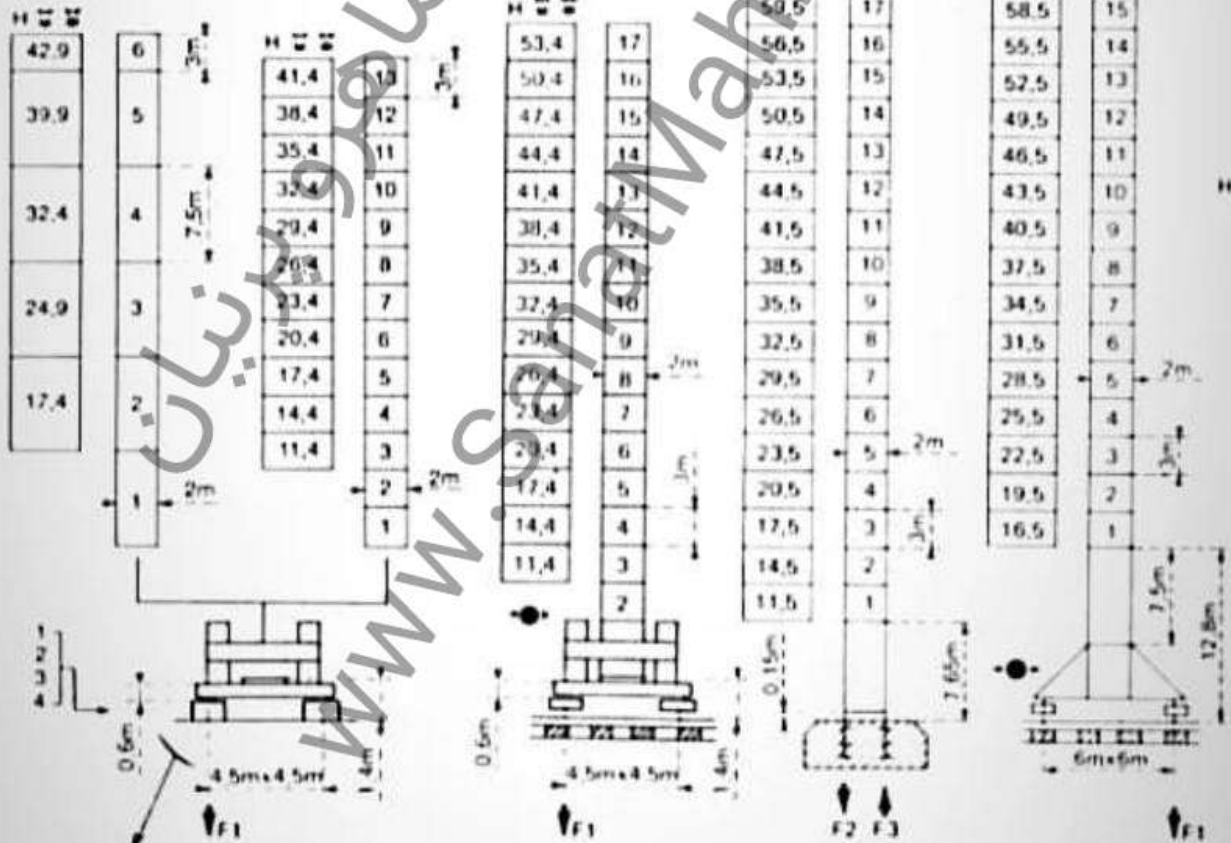
ZG 687

ZG 689

PA 663

VB 663

H_{max} - H_{min} = 1m



F - Reactions Eckdrucke Reactors Reacciones

| | | | |
|----|-------|-------|-------|
| F1 | ● 67t | ■ 74t | 1-2-4 |
| F1 | ● 78t | ■ 77t | 3 |
| | 62t | | |

| | | |
|----|-------|--------|
| F1 | ● 97t | ■ 124t |
| | 68t | |

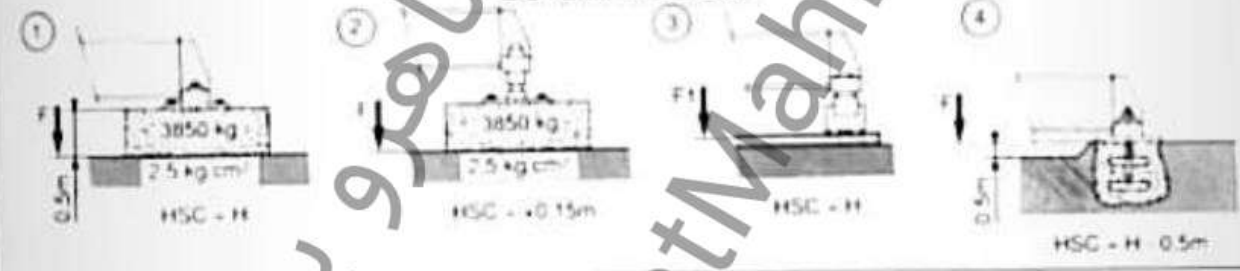
| | | |
|----|--------|--------|
| F2 | ● 135t | ■ 171t |
| F3 | ● 91t | ■ 131t |
| | 59t | |

| | | |
|----|-------|--------|
| F1 | ● 88t | ■ 115t |
| | 72t | |

Courbes de charges Lastkurven Load diagrams Curvas de cargas



ZG 684 - ZG 687



**Telescopage sur dalles - Kletterkrane im Gebäude
Climbing crane - Telecopage gruas trepadoras**

