

TOPKIT H25 / 14C

POTAIN 

POTAIN

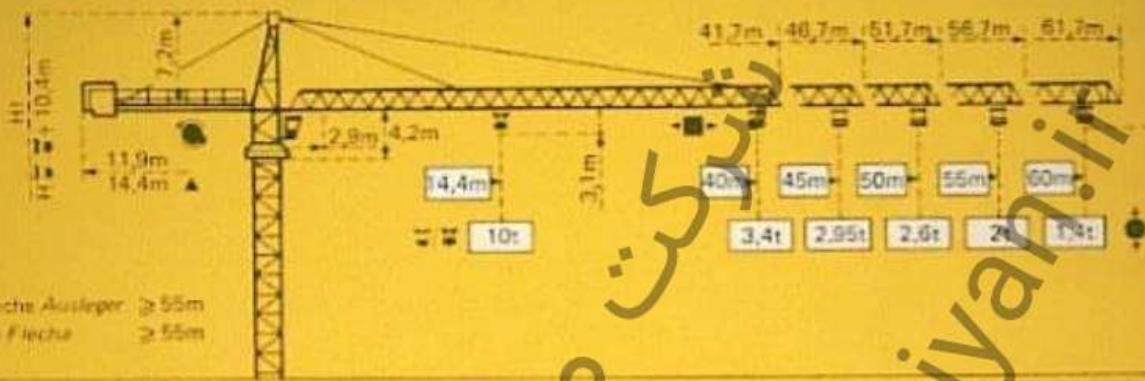
TOPKIT H25 14C

Cotes

Abmessungen

Dimensions

Dimensiones



- ▲ Flèche Ausleger: $\geq 55m$
- ▲ Jib Flecha: $\geq 55m$

Mât/Mast Mast Mást

1,6m x 1,6m

Mât/Mast Mast Mást

2m x 2m

PA 459

SB 459

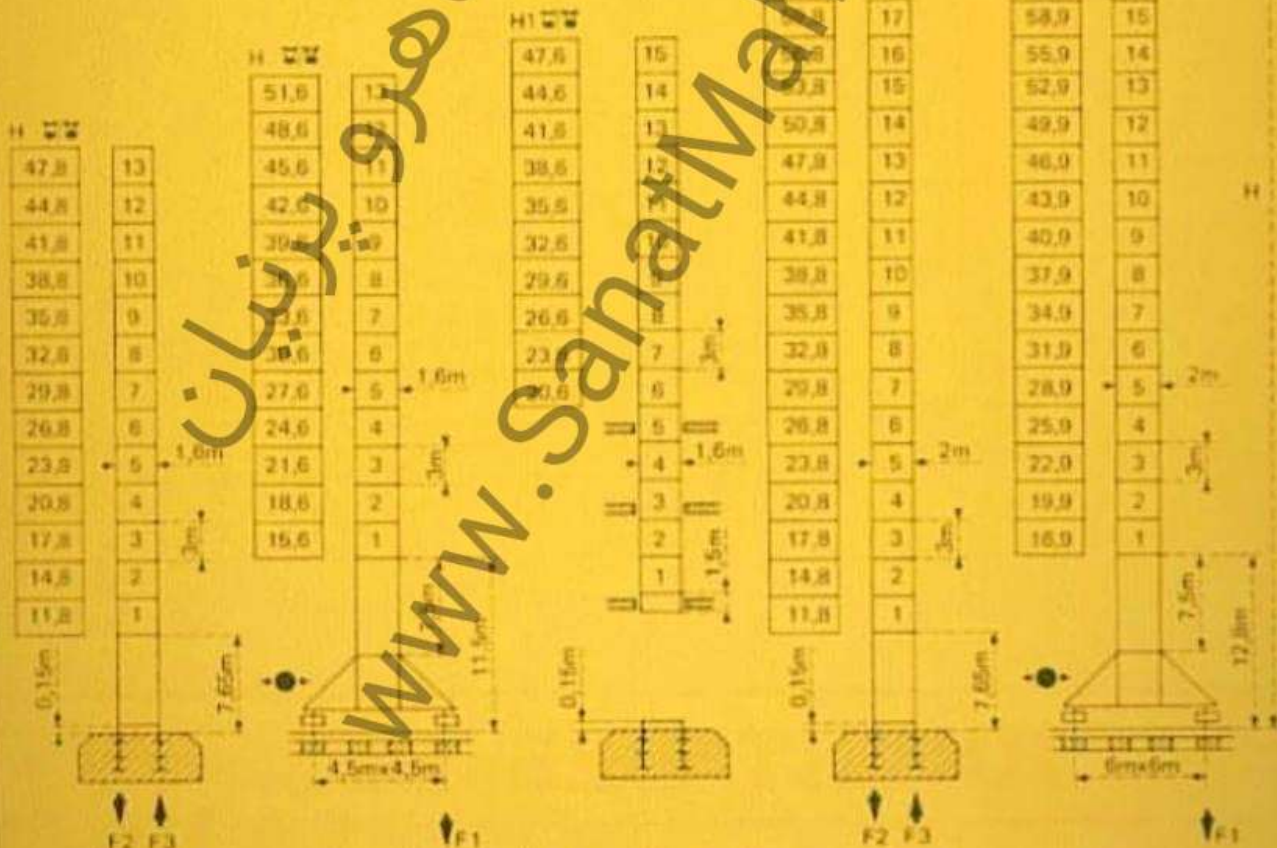
BA 45A

PA 663

VB 663

Flèche Ausleger Jib Flecha $\leq 55m$

$$H_{\text{total}} = H_{\text{max}} + 0,7m$$



F = Réactions Eckdrucke Reacciones Reacciones

F2 ● 102t ● 130t

F3 ● 70t ● 103t

30t

F1 ● 75t ● 94t

47t

Voir ci-contre
Siehe nebenstehend
See opposite
Ver página opuesta

F2 ● 108t ● 165t

F3 ● 68t ● 132t

48,5t

F1 ● 86t ● 115t

62,5t

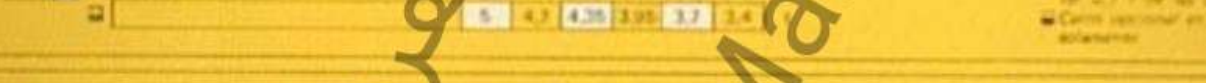
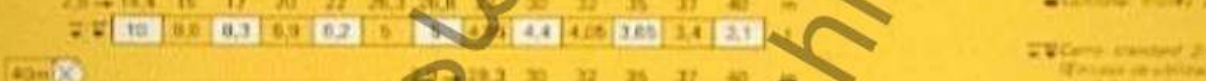
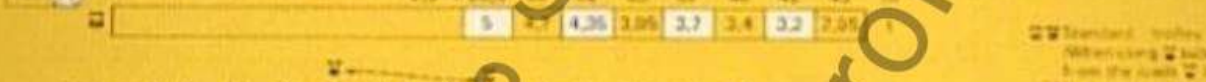
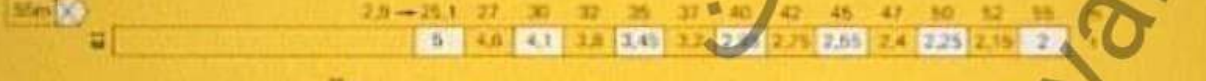
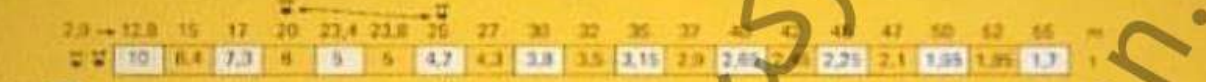
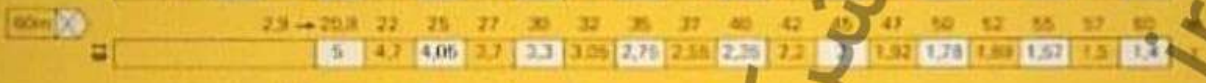
Courbes de charges

Lastkurven

Load diagrams

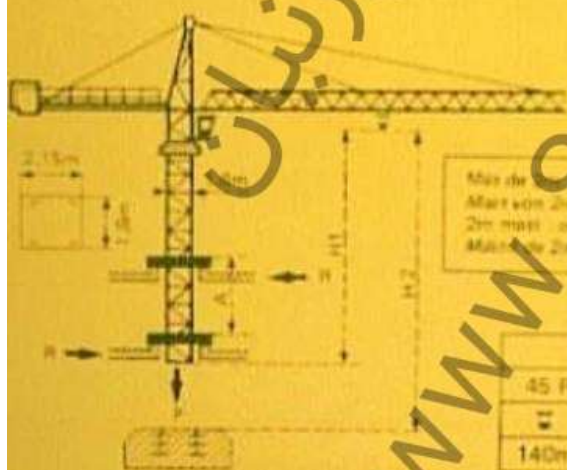
Curvas de cargas

Filete Ausleger 26 Flache



- Standard 2.4 mm. Crane fixation require 1.5 x max. height.
- Crane spreader 2.5 mm unpermet.
- Standard height 2.4 mm. When using contact 0.7 t from the crane.
- Crane spreader 2.5 mm only.
- Crane standard 2.4 mm. When using contact 0.7 t from the crane.
- Crane spreader 2.5 mm only.

Télescopage sur dalles - Kletterkrane im Gebäude
Climbing crane - Telescopage gruas trepadoras



Max. de 20 m pour le bras
Max. de 20 m pour l'auvent
Max. de 20 m pour le bras
Max. de 20 m pour l'auvent

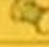






H2	
45 RCS 25C	
140m	70m



- A Distance entre cadres
- H1 Hauteur grue
- P Poids de la grue
- R Réaction horizontale
- A Abstand zwischen den Rahmen
- H1 Kranhöhe
- P Krangewicht
- R Horizontalkräfte
- A Distance between collars
- H1 Crane height
- P Crane weight
- R Horizontal reaction
- A Distancia entre marcos
- H1 Altura grúa
- P Peso de la grúa
- R Reacción horizontal

- En service
- Hors service
- Without load and ballast with longest jib and maximum height
- In Betrieb
- Außer Betrieb
- Ohne Last und Ballast mit Maximalausleger und Maximalhöhe
- In service
- Out of service
- Without load and ballast with longest jib and maximum height
- En servicio
- Fuera de servicio
- Sin carga, sin lastre con flecha y altura máxima

POTAIN TOPKIT H25 14C

			rpm/min	1		PS	kW
Levage Heben Hoisting Elevación	45 RCS 25 C 		0 → 32	5	250 m > 287	45	33
			0 → 64	2,5			
			0 → 16	10			
			0 → 32	5			
Distribution - Katzfahren Trolleying - Distribución		5 D3 V4	15 30 58			5	3,7
Orientation - Schwenken Slewing - Orientación		OMD 45	0 → 0,7 rpm/min U/min-1			12	8,8
Translation Kranfahren Travelling Traslación	50 309  R ≥ 10m VB 663  R ≥ 13m	RT 324	12 → 20			2 × 7	2 × 5,2
		TCV 449 ARC H ≤ 32,5m	10 - 50			4 × 6,8	4 × 5
		RT 443 A1 2V	15 - 30			4 × 5	4 × 3,7
		TCV 645 ARC H ≤ 41,5m	10 - 50			4 × 6,8	4 × 5
Réseau - Netzstrom - Main supply - Red						380 V - 50 HZ	
Puissance électrique requise - Anschlusswert - Necesaria electric power - Potencia eléctrica necesaria						RCS : 70 kVA	
Groupe électrogène - Stromaggregat - Generator set - Grupo electrogeno							

* Nous consulter - Auf Anfrage - Consult us - Consultare

Conforme à la directive CEE 84/534 sur le bruit acoustique - In compliance with the EEC 84/534 instruction on noise level
 Gemäß EWR-Richtlinie 84/534 über Schall-Leistungspegel - Conforme con la directiva CEE 84/534 sobre el nivel acústico

NF E82081 - 82

POTAIN 

18, rue de Charbonnières, B.P. 173-F 69132 ECULLY Cedex
 Tél. 72 20 20 20 - Télex 330 179 - Télex. Export 375 213 -
 Fax 72 20 20 00

POTAIN GmbH 6082 MÖRFELDEN WALLDORF
 Nordendstr. 79-87 - Postfach 420
 Tel. 06 105 704 0 - Télex 4 1857 45

TOPKIT H25 / 14C

Ref. 1009.18 K2N 1