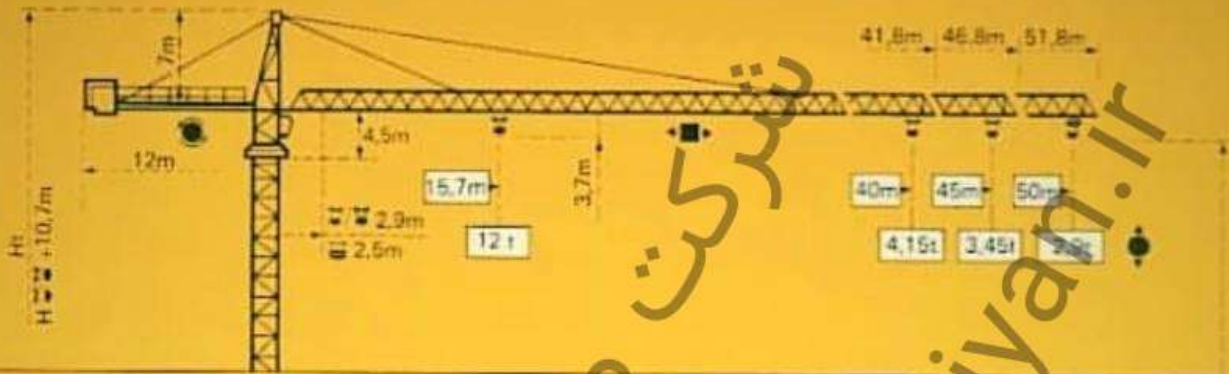


TOPKIT F3/29B1

POTAIN 

POTAIN TOPKIT F3/29B1

Cotes Abmessungen Dimensions Dimensiones



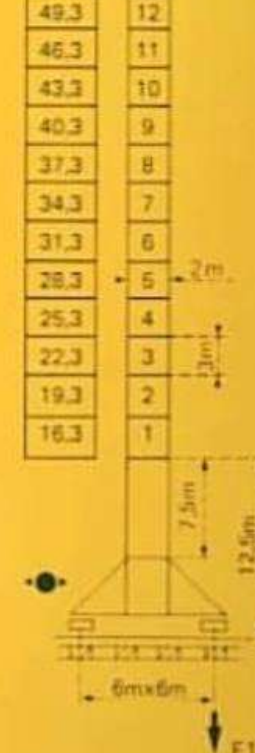
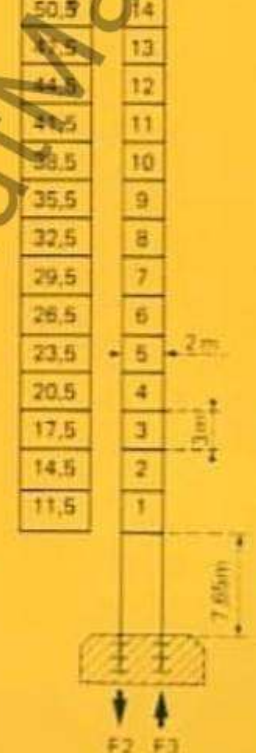
Mature Mast Mast Mástil
 1,6m x 1,6m

PA 458

Mature Mast Mast Mástil
 2m x 2m

SA 458 PA 664 VA 664

$H_c = H + 10.7 + 1m$



F = Réactions Eckdrücke Reactions Reacciones

F2	● 108t	● 90t
F3	● 66t	● 54t
	52t	

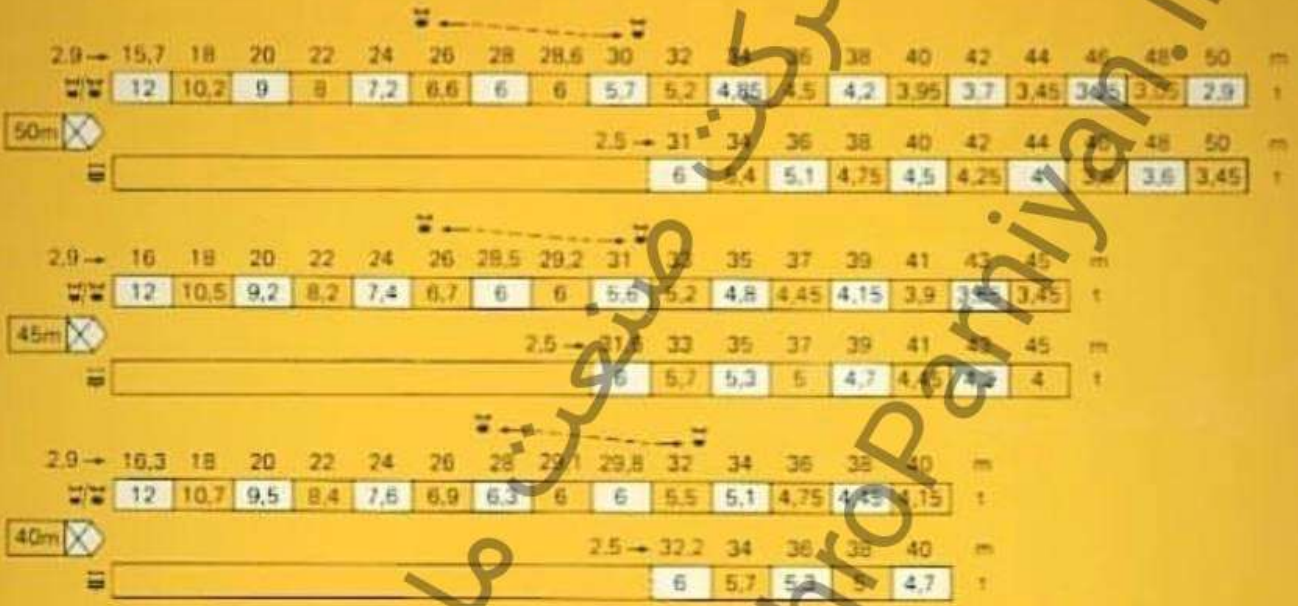
F1	● 76t	● 70t
	61t	

F2	● 122t	● 177t
F3	● 74t	● 133t
	67t	

F1	● 87t	● 119t
	81t	

Courbes de charges Lastkurven Load diagram Curvas de cargas

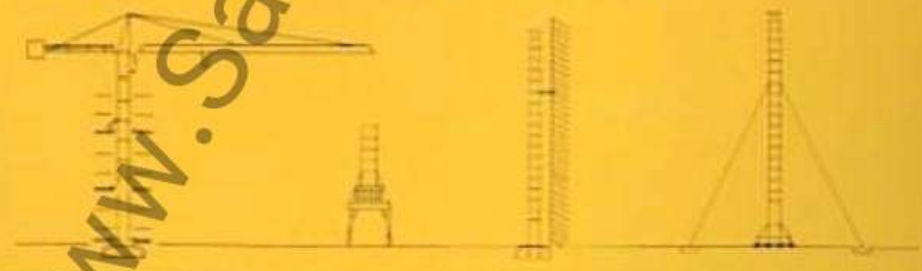
Flèche Ausleger Jib Flecha



- Chariot standard 2-4 brins (En cas d'utilisation > 0.2 t aux charges) / Chariot optionnel 2 brins uniquement
- Standardlaufkatze 2-4 Stränge (Einsatz von > 0.2 t der Lasten vor abzuziehen) / Laufkatze in Sonderausführung mit nur 2 Strängen
- Chariot standard 2-4 brins (En cas d'utilisation > 0.2 t aux charges) / Chariot optionnel 2 brins uniquement
- Standardlaufkatze 2-4 Stränge (Einsatz von > 0.2 t der Lasten vor abzuziehen) / Laufkatze in Sonderausführung mit nur 2 Strängen
- Chariot standard 2-4 brins (En cas d'utilisation > 0.2 t aux charges) / Chariot optionnel 2 brins uniquement
- Standardlaufkatze 2-4 Stränge (Einsatz von > 0.2 t der Lasten vor abzuziehen) / Laufkatze in Sonderausführung mit nur 2 Strängen

Autres implantations Aufstellmöglichkeiten Mounting possibilities Otras implantaciones

Nous consulter
Auf Anfrage
Consult us
Consultarnos













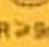



H > H maxi : nous consulter H > H maxi : Auf Anfrage H > H maxi : consult us H > H maxi : Consultarnos

- En service / In Betrieb / In service / En servicio
- Hors service / Ausser Betrieb / Out of service / Fuera de servicio

A vide sans lest avec flèche et hauteur maximum. / Ohne Last und Ballast mit Maximalausleger und Maximalhöhe. / Without load and ballast with longest jib and maximum height. / Sin cargas, sin lastre con flecha y altura máxima.

POTAIN TOPKIT F3 29B1

Mécanismes Antriebe Mechanisms Mecanismos

					شماره	1		ch hp	kW
 Levage Heben Hoisting Elevación	55 RCS 30			14	6	365m >365m	35	40.5	
				68	3				
 Levage Heben Hoisting Elevación	33 PC 30			17	12	408m >408m	33	24	
				34	6				
				3.5	6				
				19	6				
				38	6				
				1.75	12				
9.5	12								
				7	6				
Distribution - Katzfahren Trolleying - Distribución			6 DPC 4	7.5 30 30			6	4.4	
Orientation - Schwenken Slewing - Orientación			OMD 55	0 → 0.74 m/min U/min rpm			2 x 8	2 x 5.9	
Translation Kranfahren Travelling Traslación	SA 458		RT 32 A1	12.5-25			2 x 7	2 x 5.2	
	Standard Standard Standard Standard		RC 446 AR H ≤ 31 m	10 - 50			4 x 6.8	4 x 5	
	VA664		RT 443 A1 2V	15 - 30			4 x 5	4 x 3.7	
	Rapide Schnell Fast Rápida		RC 646 AR H ≤ 43.3 m	10 - 50			4 x 6.8	4 x 5	
Puissance électrique nécessaire Anschlusswert Necessary electric power Potencia eléctrica necesaria			300 V 50 Hz	Réseau - Netzstrom - Mains supply - Red			RCS - 75kVA PC - 60kVA		
				Groupe électrogène Stromaggregat Generator set Grupo electrogeno					

* Nous consulter - Auf Anfrage - Consult us - Consultarnos

POTAIN 

18, rue de Charbonnières B.P. 173 - F 69132 ECULLY Cedex
Tel. (7) 833.81.81 - Télex 330 179
DIRECTION DES ACTIVITES INTERNATIONALES
207, rue de Bercy - F 75012 PARIS
Tel. (1) 347.30.77 - Télex 215 483
POTAIN GmbH - D 6082 MÖRFELDEN - WALLDORF
Nordenstr. 79-87 - Postfach 420 - Tel. 06105 704.0 - Telex 4.195745
POTAIN SUISSE S.A. - CH 5115 MÖRIKEN WILDEGG
Tel. 64.53.19.91 - Télex 68294

Ref. B317 KBA1