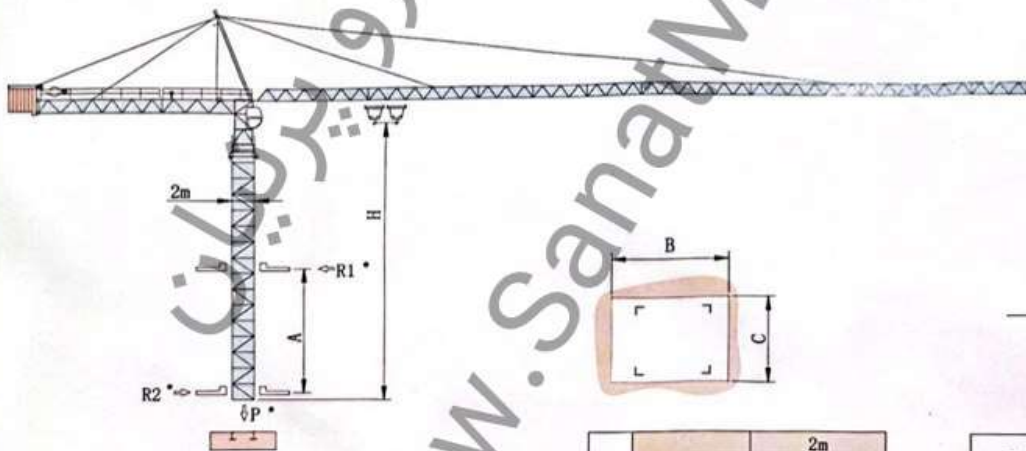


塔身截面 Mast: 2mx2m

| 楼层 (Floor) | 高度 (Height) H |
|------------|---------------|
| 13 | 51.2 |
| 12 | 45.2 |
| 11 | 42.2 |
| 10 | 39.2 |
| 9 | 36.2 |
| 8 | 33.2 |
| 7 | 30.2 |
| 6 | 27.2 |
| 5 | 24.2 |
| 4 | 21.2 |
| 3 | 18.2 |
| 2 | 15.2 |
| 1 | 12.2 |

$F2 = 144t = 124t$
 $F3 = 92t = 78t$
 自重 84t

内爬塔机 Climbing crane



| 楼层 (Floor) | 高度 (Height) H |
|------------|---------------|
| 12 | 50.1 |
| 11 | 47.1 |
| 10 | 44.1 |
| 9 | 41.1 |
| 8 | 38.1 |
| 7 | 35.1 |
| 6 | 32.1 |
| 5 | 29.1 |
| 4 | 26.1 |
| 3 | 23.1 |
| 2 | 20.1 |
| 1 | 17.1 |

$F1 = 91t = 95t$
 自重 95t

- A 内爬框架距离 Distance between collars
- H 塔吊高度 Crane height
- P 塔吊自重(工作状态) Crane weight(In service)
- R1 水平反力最大 Horizontal reaction max
- R2 水平反力最大 Horizontal reaction max
- B 楼板开口 Floor notch
- C 楼板开口 Floor notch

| 参数 (Parameter) | 数值 (Value) |
|--------------------|-------------|
| 塔身宽度 (Tower width) | 2m |
| A | 12m~19m |
| B | 2.58m |
| C | 2.17m |
| H | 45.6m |
| R1 | 31.5t~19.9t |
| R2 | 28t~16.4t |
| P | 102t |

- 工作状态无系数
- No parameter in working service

| F 反力 Reactions |
|--|
| • 工作状态 In service |
| • 非工作状态 Out of service |
| ⊕ 自重 Self-load |
| 不带载荷及配重 Without load and counter-weight |
| 最大臂长及标准 with longest jib and standard height |
| 高度时的自重。 Self-load at height. |

CamScanner