

塔身截面 Mast:2mx2m

| H | Q |
|----|------|
| 14 | 59.7 |
| 13 | 48.7 |
| 12 | 45.7 |
| 11 | 42.7 |
| 10 | 39.7 |
| 9 | 36.7 |
| 8 | 33.7 |
| 7 | 30.7 |
| 6 | 27.7 |
| 5 | 24.7 |
| 4 | 21.7 |
| 3 | 18.7 |
| 2 | 15.7 |
| 1 | 12.7 |

| | | |
|-----|-------|--------|
| F2 | +144t | = 124t |
| F3 | +99t | = 78t |
| 82t | | |

| H | Q |
|----|------|
| 14 | 56.6 |
| 13 | 53.6 |
| 12 | 50.6 |
| 11 | 47.6 |
| 10 | 44.6 |
| 9 | 41.6 |
| 8 | 38.6 |
| 7 | 35.6 |
| 6 | 32.6 |
| 5 | 29.6 |
| 4 | 26.6 |
| 3 | 23.6 |
| 2 | 20.6 |
| 1 | 17.6 |

| | | |
|-----|------|-------|
| F1 | +91t | = 96t |
| 93t | | |

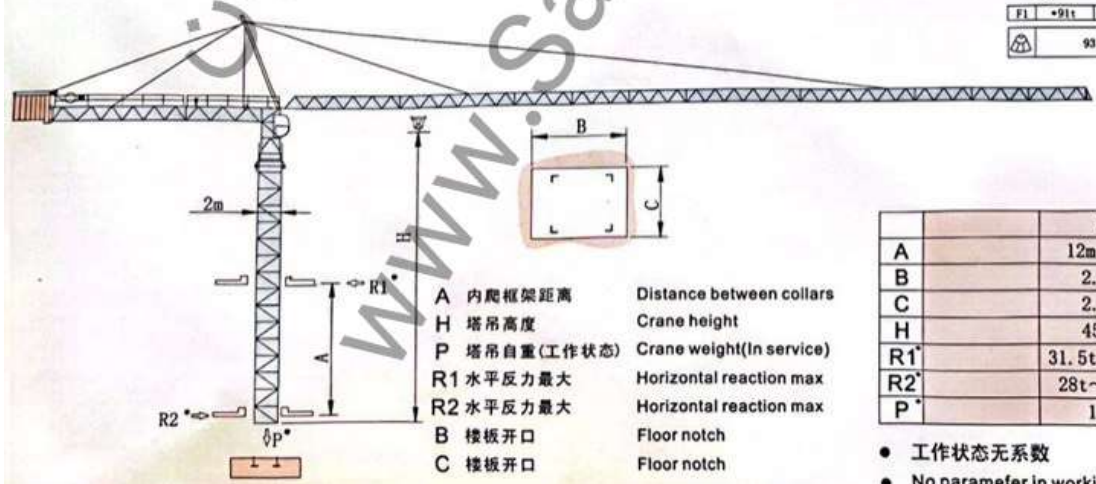
F 反力 Reactions

- 工作状态 In service
- 非工作状态 Out of service

自重 Self-load

不带载荷及配重
最大臂长及标准
高度时的自重
Without load and counter-weight
with longest jib and standard
height.

爬塔机 Climbing crane



A 内爬框架距离 Distance between collars
H 塔吊高度 Crane height
P 塔吊自重(工作状态) Crane weight(In service)
R1 水平反力最大 Horizontal reaction max
R2 水平反力最大 Horizontal reaction max
B 楼板开口 Floor notch
C 楼板开口 Floor notch

| | 2m |
|-----|-------------|
| A | 12m~19m |
| B | 2.58m |
| C | 2.17m |
| H | 45.6m |
| R1' | 31.5t~19.9t |
| R2' | 28t~16.4t |
| P | 102t |

- 工作状态无系数
- No parameter in working service