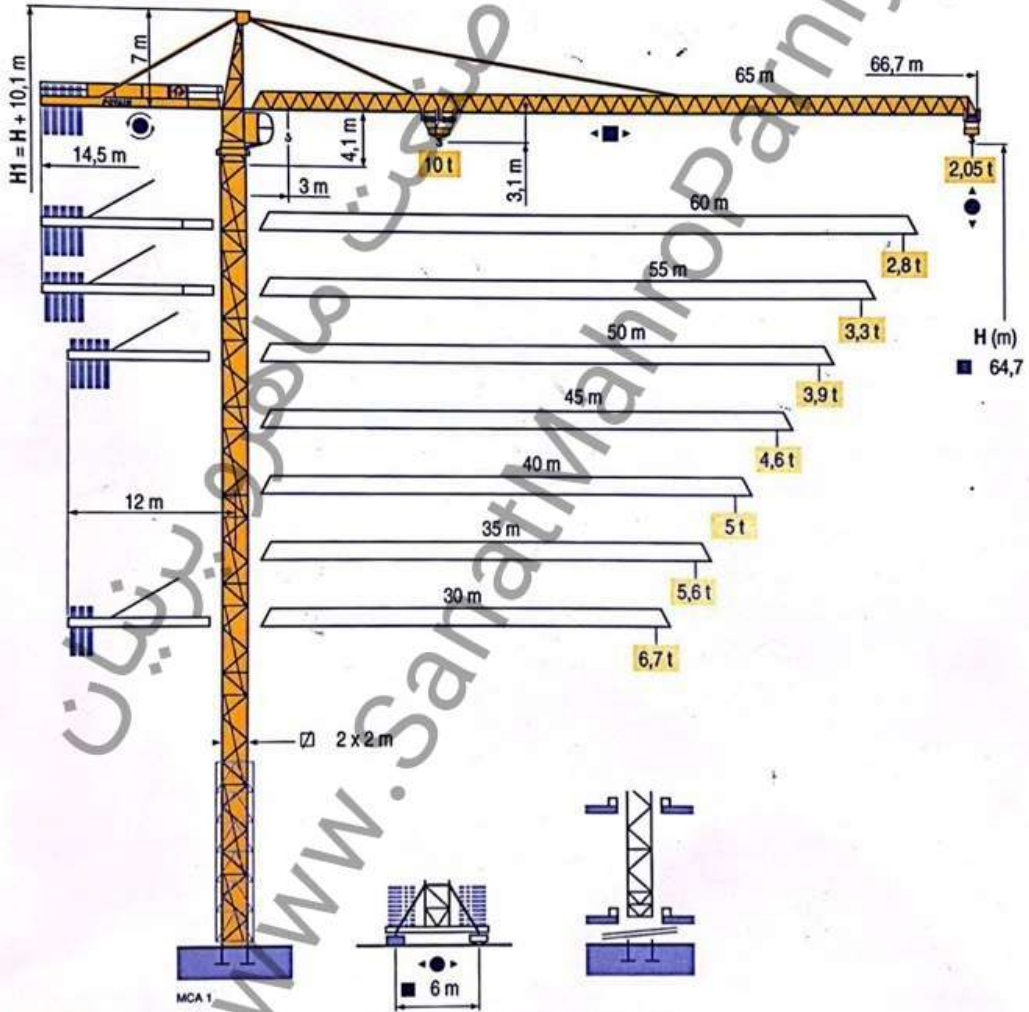


POTAIN 

MC 235 B 



TOPKIT

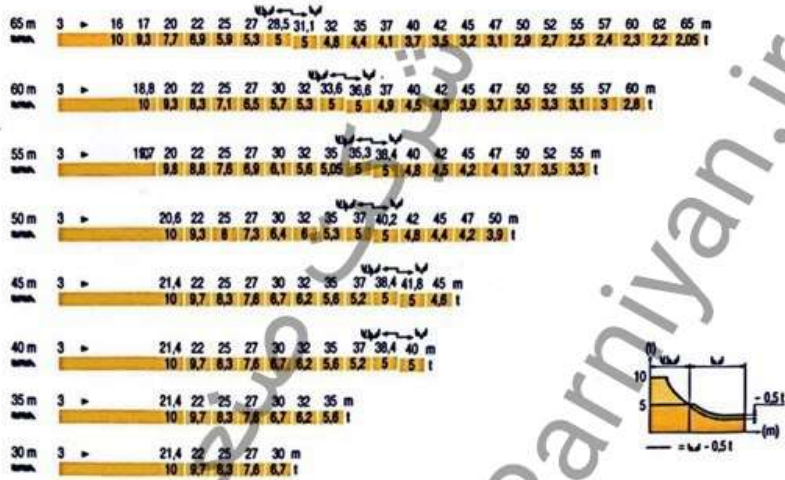
  FEM 1.001-A3

Manitowoc
Crane Group

Above. Beyond. Everywhere.™

CamScanner

Load diagrams
MCA 1



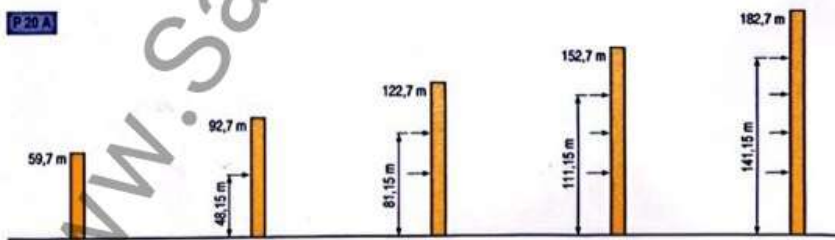
Counter-jib ballast
MCA 1

Crane height (m)	Jib length (m)	Ballast weight (kg)	
		4800 kg - 4200 kg	3400 kg
65 m	14,5 m	23 600	
60 m	14,5 m	21 700	
55 m	14,5 m	20 200	
50 m	12 m	23 600	
45 m	12 m	21 700	
40 m	12 m	19 400	
35 m	12 m	16 600	
30 m	12 m	14 100	

Base ballast
MCA 1

Crane height (m)	Jib length (m)	Crane weight (t)	Horizontal reaction (t)																		
			64,7	61,7	58,7	55,7	52,7	49,7	46,7	43,7	40,7	37,7	34,7	31,7	28,7	25,7	22,7	19,7	16,7	13,7	
2 m	VB 20 A - 0 -		108	84	72	60	48	36	36	36	36	36	36	36	36	36	36	36	36	36	36

Anchorage
MCA 1



TOPKIT
MC 235 B

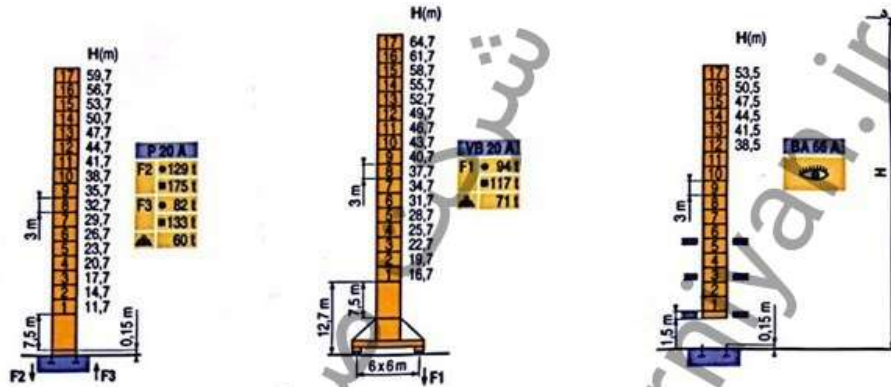


- GB**
- A Distance between collars
- H1 Crane height
- P Crane weight (in service)
- R Horizontal reaction

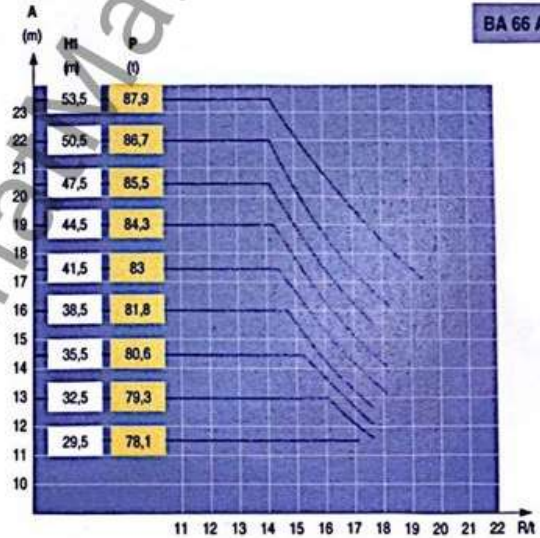
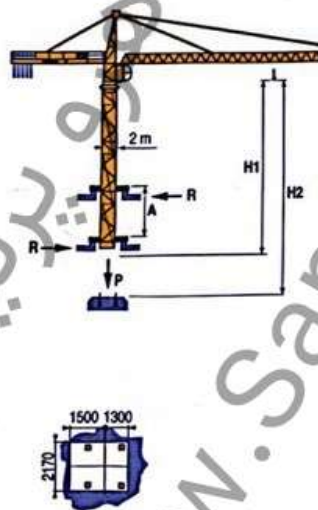
CamScanner

Masts / Reactions
MCA 1

□ 2 m
30 m = 65 m



Climbing crane
MCA 1



TOPKIT
MC 235 B

POTAIN

- Reactions in service
- Reactions out of service
- ▲ Without load, ballast (or transport axles), with maximum jib and maximum height.
- 👁 See climbing crane

CamScanner