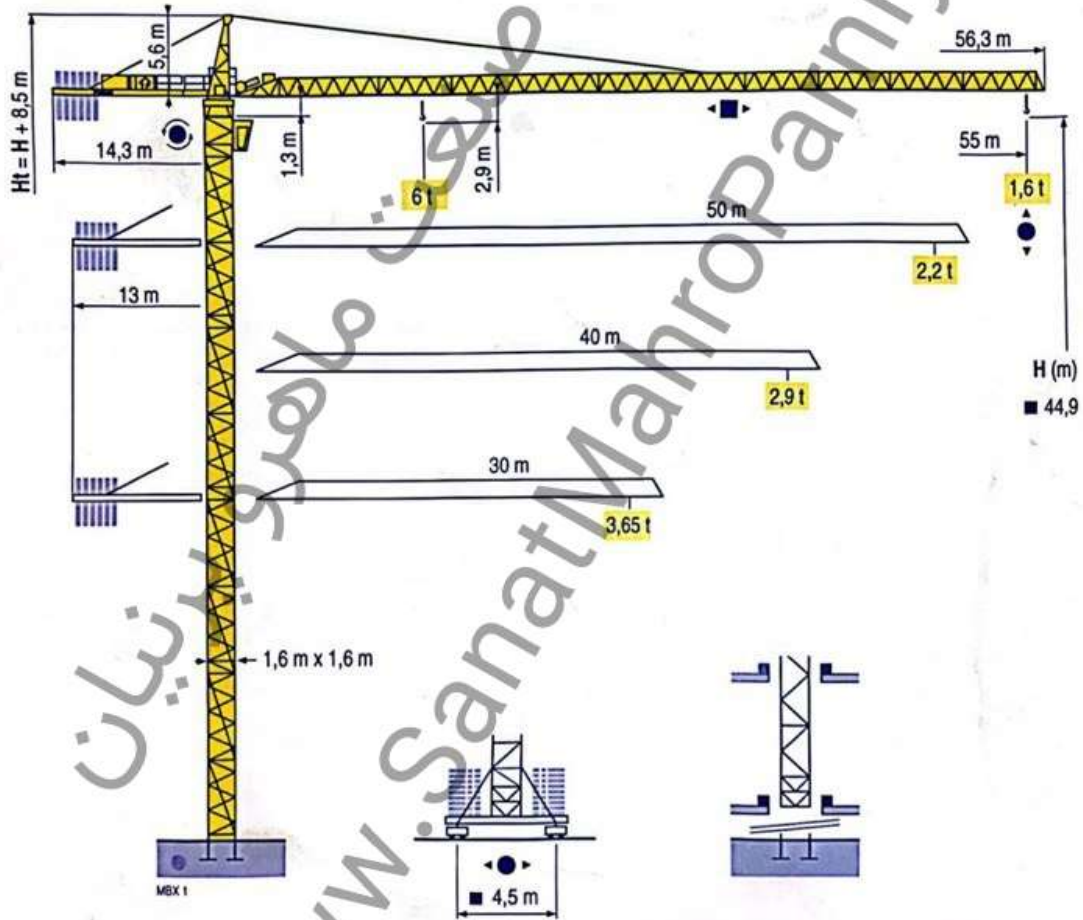


**POTAIN** 

**MC 115 B** 

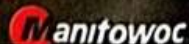


**CITY CRANE**

  
TUV  
ISO 9001

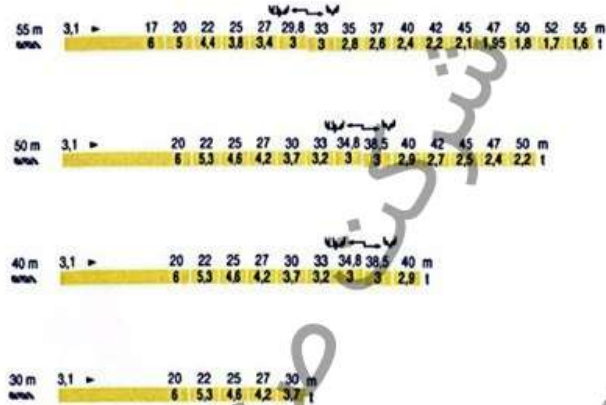


FEM 1.001-A3



CamScanner

**Load diagrams**  
MBA 1



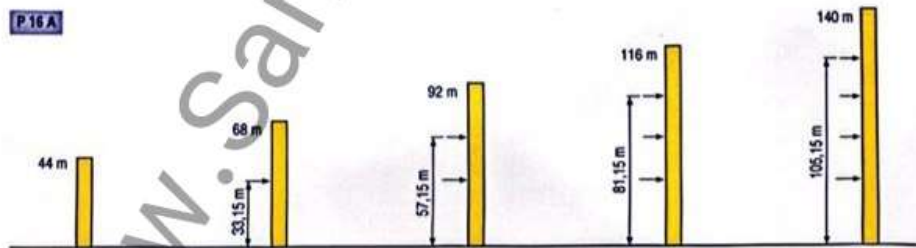
**Counter-jib ballast**  
MBA 1

Crane height (m)	Distance (m)	3450 kg	2250 kg	Weight (kg)
55 m	14.3 m	3	1	16 050
50 m	13 m	3	1	16 050
40 m	13 m	4	-	13 800
30 m	13 m	2	2	13 800

**Base ballast**  
MBA 1

Crane height (m)	SB 16 A	H (m)	44,9	41,9	38,9	35,9	32,9	29,9	26,9	23,9	20,9	17,9	14,9
1,6 m	SB 16 A	(t)	66	54	42	42	42	42	42	42	42	42	42

**Anchorage**  
MBA 1



**CITY CRANE  
MC 115 B**

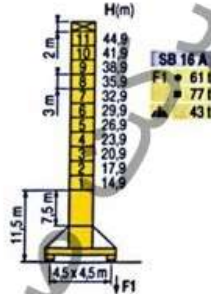


- GB**
- A** Distance between collars
- H1** Crane height
- P** Crane weight (in service)
- R** Horizontal reaction

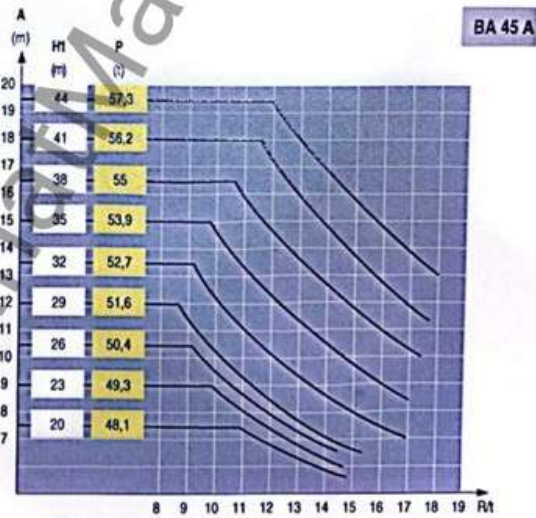
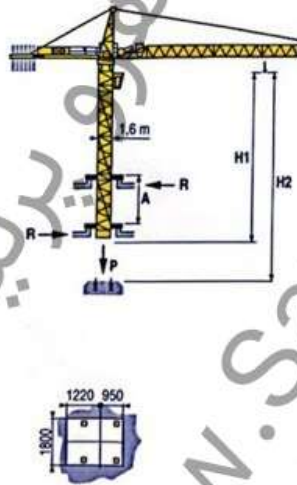
CamScanner

Masts /  
Reactions  
MAX 1

□ 1,6 m  
30 m = 55 m



Climbing crane  
MAX 1



CITY CRANE  
MC 115 B

POTAIN

- Reactions in service
- Reactions out of service
- Without load, ballast (or transport axles), with maximum jib and maximum height.
- See climbing crane

CamScanner