

## CITY CRANE MC 60


LHW 2

**POTAIN** 



CamScanner

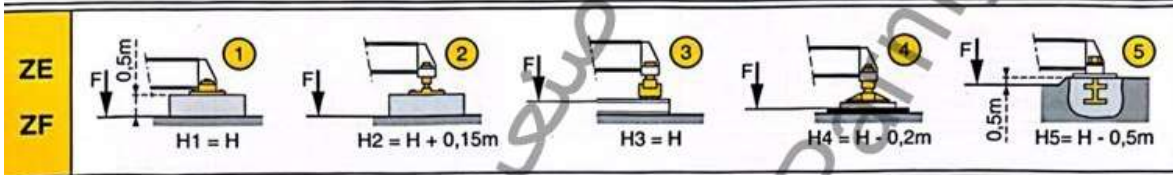
Courbes de charges - Lastkurven - Load diagrams - Curvas de cargas - Curve di carico

 Flèche Ausleger Jib Flecha Braccio

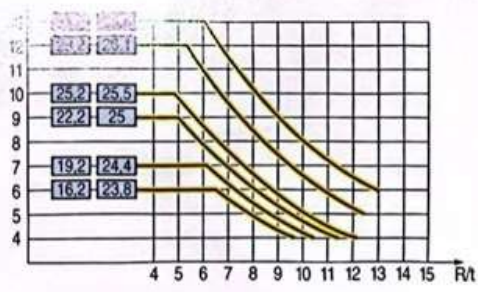
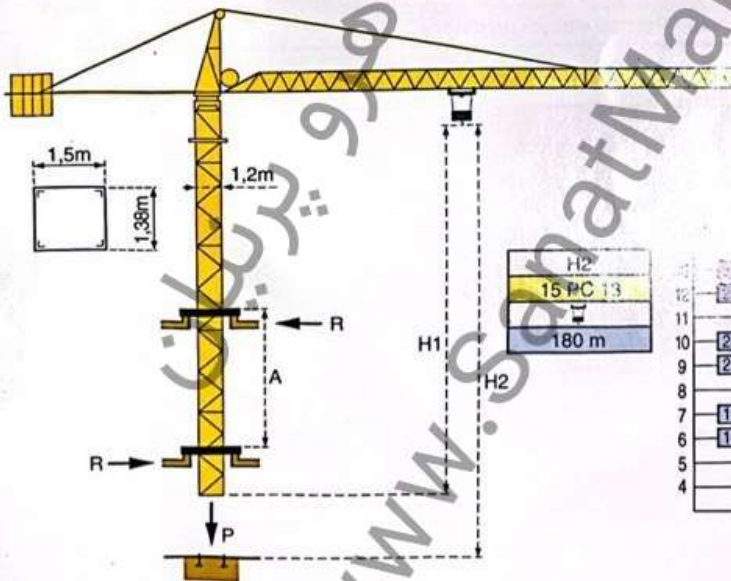
43 m	19,9	22	25	27	30	32	35	37	40	41	43	m
	2,5	2,22	1,9	1,73	1,52	1,4	1,25	1,16	1,04	1,01	0,95	t

40 m	20,6	22	25	27	30	32	35	37	40	m
	2,5	2,31	1,98	1,81	1,59	1,46	1,31	1,21	1,1	t

30 m	22,7	25	27	30	m
	2,5	2,24	2,04	1,8	t



Télescopage sur dalles - Kletterkrane im Gebäude - Climbing crane  
Telescopage gruas trepadoras - Gru in cavedio



A Distance entre cadres H1 Hauteur grue P Poids de la grue (en service) R Réaction horizontale	A Abstand zwischen den Rahmen H1 Kranhöhe P Krangewicht (in Betrieb) R Horizontalkräfte	A Distance between collars H1 Crane height P Crane weight (in service) R Horizontal reaction	A Distancia entre marcos H1 Altura grúa P Peso de la grúa (en servicio) R Reaccion horizontal	A Distanza fra i telai H1 Altezza gru P Peso della gru (in servizio) R Reazione orizzontale
---	--	---	--	--

● En service ■ Hors service	● In Betrieb ■ Ausser Betrieb	● In service ■ Out of service	● En servicio ■ Fuera de servicio	● In servizio ■ Fuori servizio
⊕ A vide sans lest avec flèche et hauteur maximum.	⊕ Ohne Last und Ballast mit Maximalausleger und Maximalhöhe.	⊕ Without load and ballast with longest jib and maximum height.	⊕ Sin carga, sin lastre con flecha y altura máxima.	⊕ A vuoto senza zavorra e con braccio massimo e altezza massima.

**POTAIN** CITY CRANE MC 60

CamScanner

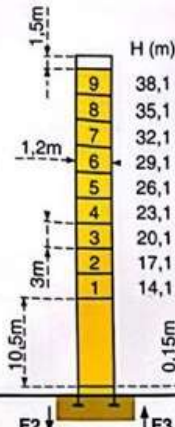
Mats - Maste - Masts - Mástil - Torre



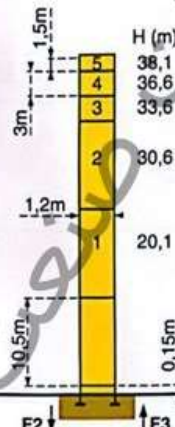
□ 1,2m

Flèche - Ausleger - Jib  
Flecha - Braccio  
30m = 43m

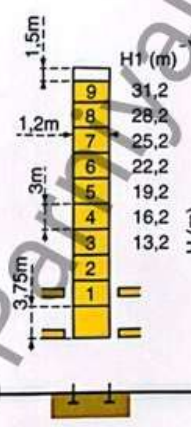
**P 12A**



**P 12A**



**B 125A**

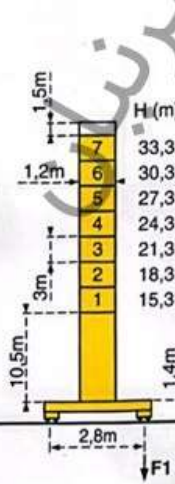


F2 ● 57t	■ 83t
F3 ● 43t	■ 70t
⊕ 19,5t	

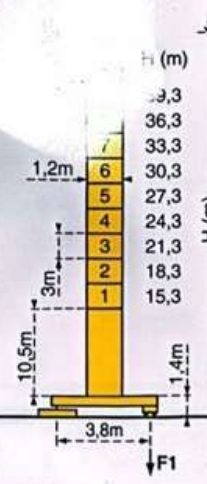
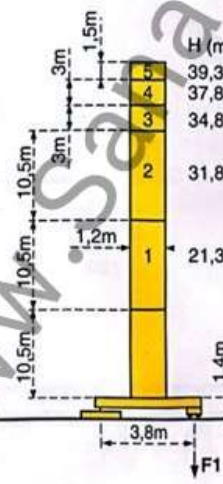
F2 ● 57t	■ 83t
F3 ● 43t	■ 70t
⊕ 19,5t	

Voir ci-contre  
Siehe nebenstehend  
See opposite  
Ver pagina opoesta  
Vedi pagina accanto

**ZE 12A**



**ZF 12A**



F1 ● 40t	■ 49t
⊕ 22,5t	

F1 ● 38t	■ 51t
⊕ 24,5t	

F1 ● 38t	■ 51t
⊕ 24,5t	

F = Réactions - Eckdrücke - Reactions - Reacciones - Reazioni

UHW 2