

Courbes de charges - Lastkurven - Load diagrams - Curvas de cargas - Curve di carico

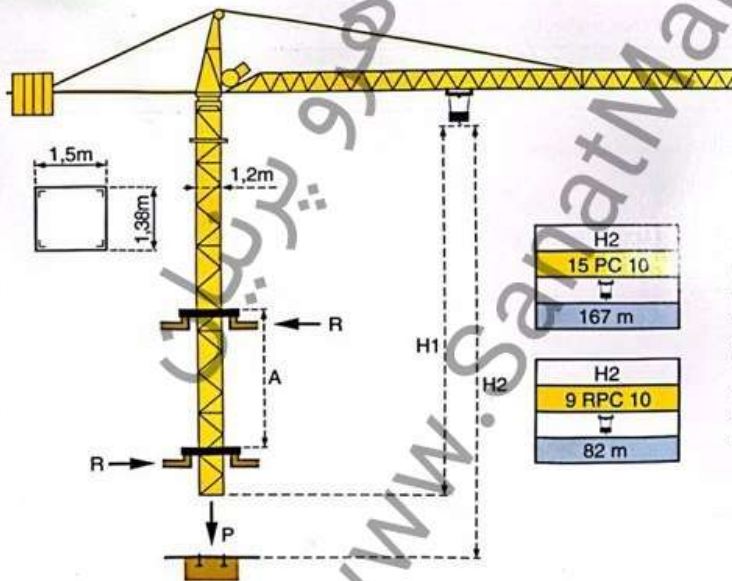
Flèche Ausleger Jib Flecha Braccio

35 m	18,1	20	22	25	27	30	32	35	m
	2	1,77	1,57	1,33	1,21	1,05	0,96	0,85	t

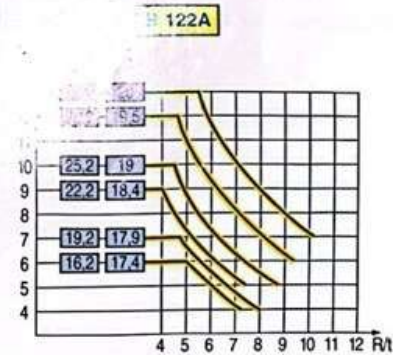
30 m	19,3	20	22	25	27	30	m
	2	1,92	1,71	1,45	1,32	1,15	t



Télescopage sur dalles - Kletterkrane im Gebäude - Climbing crane
Telescopage gruas trepadoras - Gru in cavedio



H2	15 PC 10	167 m
H2	9 RPC 10	82 m



A Distance entre cadres H1 Hauteur grue P Poids de la grue (en service) R Réaction horizontale	A Abstand zwischen den Rahmen H1 Kranhöhe P Krangewicht (in Betrieb) R Horizontalkräfte	A Distance between collars H1 Crane height P Crane weight (in service) R Horizontal reaction	A Distancia entre marcos H1 Altura grúa P Peso de la grúa (en servicio) R Reaccion horizontal	A Distanza fra i telai H1 Altezza gru P Peso della gru (in servizio) R Reazione orizzontale
---	--	---	--	--

- | | | | | |
|--|--|---|---|--|
| ● En service
■ Hors service | ● In Betrieb
■ Ausser Betrieb | ● In service
■ Out of service | ● En servicio
■ Fuera de servicio | ● In servizio
■ Fuori servizio |
| ⊕ A vide sans lest avec flèche et hauteur maximum. | ⊕ Ohne Last und Ballast mit Maximalausleger und Maximalhöhe. | ⊕ Without load and ballast with longest jib and maximum height. | ⊕ Sin carga, sin lastre con flecha y altura máxima. | ⊕ A vuoto senza zavorra e con braccio massimo e altezza massima. |

POTAIN CITY CRANE MC 40

CamScanner

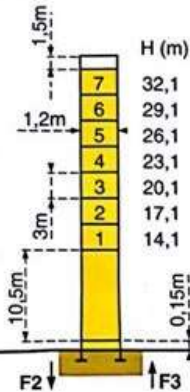
Mats - Maste - Masts - Mástil - Torre



□ 1,2m

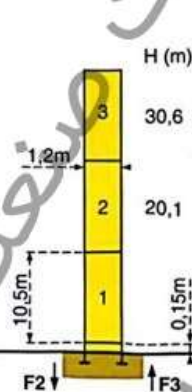
Flèche - Ausleger - Jib
Flecha - Braccio
30m → 35m

P 12A



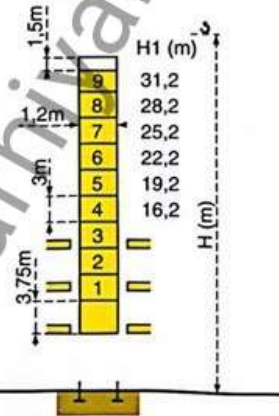
F2	● 40t	■ 55t
F3	● 29t	■ 46t
⊕	14t	

P 12A



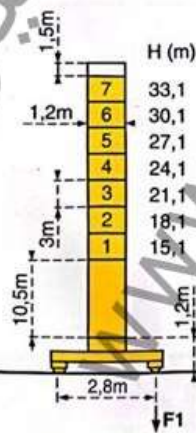
F2	● 36t	■ 44t
F3	● 27t	■ 36t
⊕	11t	

B 122A



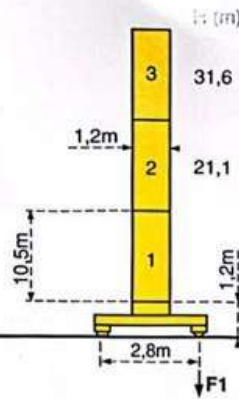
Voir ci-contre
Siehe nebenstehend
See opposite
Ver pagina opuesta
Vedi pagina accanto

ZJ 12A



F1	● 33t	■ 45t
⊕	17t	

ZJ



F1	● 29t	■ 36t
⊕	14t	

F = Réactions - Eckdrücke - Reactions - Reacciones - Reazioni